

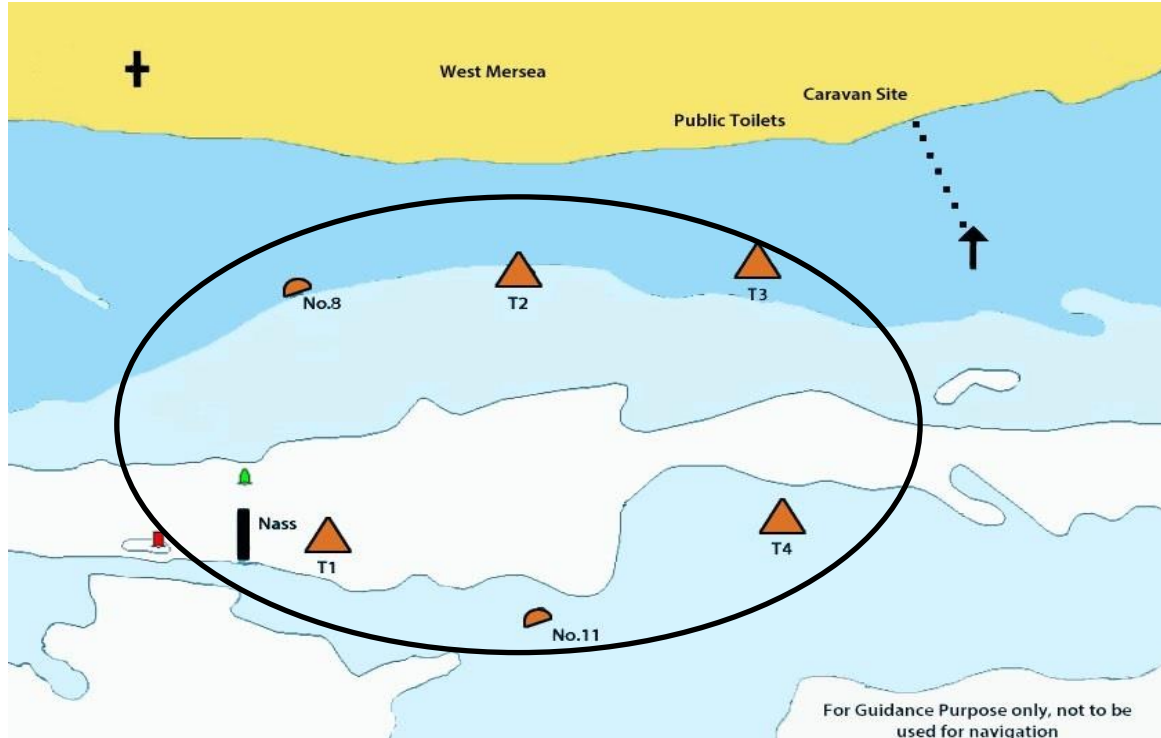
COURSES FOR MFOBS & DINGHIES 2018 – EVENTS 10-15

ALL MARKS TO BE ROUNDED OR PASSED ON THE HAND & IN THE SEQUENCE INDICATED BELOW:

Code	COURSES	WIND	Distance Approx. Nm
A	T4 (P); T3 (P); 8 (P); T1 (P); 11 (P); Finish Line	N	3
B	T1 (S); T3 (P); T2 (P); T4 (S); 11 (S); Finish Line	NE	3½
C	8 (S); T3 (S); 11 (S); T2 (P); T1 (P); Finish Line	E	3¼
D	T3 (P); 11 (S); T1 (S); T2 (S); Finish Line	SE	3
E	T2 (S); T4 (P); T3 (P); T1 (S); 8 (S); Finish Line	SE	3½
F	T2 (P); 11 (S); 8 (S); T4 (P); T3 (P); Finish Line	S	3¼
G	8 (S); T4 (P); T3 (P); T1 (P); 11 (P); T2(P); Finish Line	SW	3¼
H	T3 (S); T1 (P); T4 (P); T2 (P); Finish Line	SW	3½
J	T4 (S); T1 (S); T2 (S); 11 (P); T3 (P); Finish Line	W	4
K	4 (P); T1 (P); T3 (S); T4 (S); T2 (P); Finish Line	W	3
L	T1 (P); T3 (S); T4 (S); T2 (P); 11 (S); Finish Line	NW	3½

NOTES

1. All the above courses will begin with a windward mark - see Sailing Instruction C6
2. If more than one lap is set pass through the Finish Line at the end of each lap.
3. The windward mark is **INCLUDED** in every lap.

**MARKS**

The marks to be used are as follow:-

- Orange Race Marks - Numbers 8 & 11.
- Yellow Race Marks - Numbers 7; 9 & 15
- Orange Inflatable tetrahedron buoys laid for the week - T1; T2; T3 & T4.
- Yellow Inflatable buoy laid each day - Windward Mark
- Yellow Inflatable buoy laid each day - Outer limit Mark.