

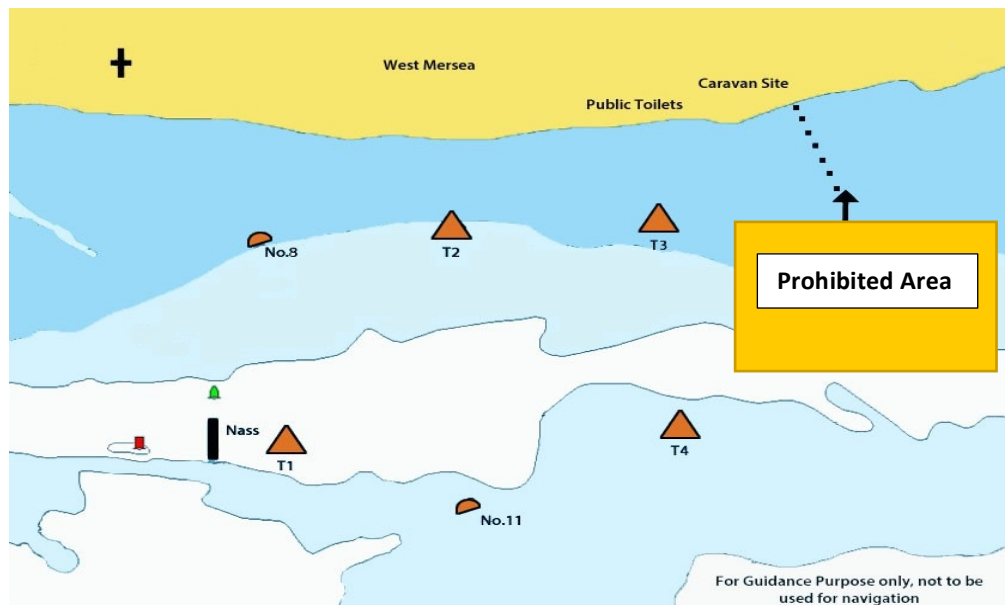
COURSES FOR MFOBS & DINGHIES 2019 – EVENTS 9A-14

ALL MARKS TO BE ROUNDED OR PASSED ON THE HAND & IN THE SEQUENCE INDICATED BELOW:

Code	COURSES	WIND	Distance Approx. Nm
A	11(P); T2(S); T3(S); T1(P); Finish Line	N	3
B	T1 (S); T3 (P); T2 (P); T4 (S); 11 (S); Finish Line	NE	3½
C	8 (S); T3 (S); 11 (S); T2 (P); T1 (P); Finish Line	E	3¼
D	11(S); 8(S); T4(S); T1(S); T2(S); Finish Line	SE	3 ½
E	T2 (S); T4 (S); 11(S); 8(S); Finish Line	SE	3
F	8(P); T1(P); T4(P); T2(P); Finish Line	S	3
G	T2(S); T1(S); 8(S); 11(P); T3(P);	SW	3¼
H	T3 (S); T1 (P); T4 (P); T2 (P); Finish Line	SW	3½
J	T2 (S); T1 (P); 11 (P); 8 (P); Finish Line	SW	3 ¾
K	T4 (S); T1 (S); T2 (S); 11(P); T3 (P); Finish Line	W	4
L	T1 (P); T3 (S); T4 (S); T2 (P); 11 (S); Finish Line	NW	3½

NOTES

1. All the above courses will begin with a windward mark - see Sailing Instruction C6
2. If more than one lap is set pass through the Finish Line at the end of each lap.
3. The windward mark is **INCLUDED** in every lap.



PROHIBITED AREA

There is a prohibited area marked by yellow buoys close to the eastern limit of the Race Area.

Competitors must keep clear of this prohibited area at all times.

MARKS

The marks to be used are as follow:-

- Orange Race Marks - Numbers 8 & 11.
- Orange Inflatable tetrahedron buoys laid for the week - T1; T2; T3 & T4.
- Yellow Inflatable buoy laid each day - Windward Mark
- Yellow Inflatable buoy laid each day - Outer limit Mark