

## SAILING INSTRUCTIONS PART C

### Additional Sailing Instructions Applicable to Competitors in Dinghy Classes & MFOBs Events 9 - 13 only

#### C1 RULES

In addition to the Racing Rules of Sailing (RRS), the Notice of Race and these Sailing Instructions, Events 9 – 11 (class dinghies) will be governed by respective dinghy class rules.

Events 12 & 13 MFOBs will also be governed by the class rules and safety regulations of the Mersea Fisherman’s Open Boat Association. For details please contact: - **David Cope – Tel 07764559380**

#### C2 SIGNALS MADE ASHORE

Signals made ashore will be displayed from the flag mast at the head of the causeway.

#### C3 CLASS DIVISIONS & HANDICAPS

a) The MFOB fleet will be divided into two divisions Fast (HN 1200 and below) & Slow (HN above 1200) although results will be combined to give overall places for each race and the series.






b) The dinghy fleet will be divided into three divisions Slow with PNs above 1160, Medium PNs between 1111 and 1160 and Fast PNs up to 1110.

c) All class divisions shall be at the sole discretion of the Race Committee.

d) Handicaps for MFOBs shall be taken from the latest MFOB handicap list. Class Dinghy handicaps shall be based on the PY System.

#### C4 CLASSES AND START TIMES

One race per day is scheduled; the Race committee reserve the right to run an additional race on any day to make good any races lost through adverse weather etc.

Event No	Class	Stat Time		Warning Signal
		Monday & Tuesday	Thursday, Friday & Saturday	
9	Class Dinghies Slow PYN 1160 to 1450	14.00	15.00	K 
10	Class Dinghies Medium PYN 1111 to 1160	14.05	15.05	T 
11	Class Dinghies Fast PYN up to 1110	14.10	15.10	R 
12	Mersea Fishermans Open Boats Slow division	14.15	15.15	J 
13	Mersea Fishermans Open Boats Fast Division	14.20	15.20	D 

If any start is subject to a General Recall, subsequent starts will be delayed.

#### C5 SIGNING ON AND OFF

- i All competitors in events 9-11 (dinghies) are required to tally on before going afloat and to tally off immediately on coming ashore.
- ii Competitors in events 12 & 13, MFOBs, are required to tally on before leaving their mooring and to tally off as soon as possible on regaining their mooring.
- iii Tallying for all competitors will be to the appropriate WhatsApp group. When a competitors entry is received they will be added to Mersea Week Dinghies Group or Mersea Week MFOBs Group.
- iv These are vital safety measures and failure to comply with this Sailing Instruction WILL RESULT IN DISQUALIFICATION without a hearing. This changes RRSs 63.1, 64 & A5.

## C6 RACE AREA

The race area situated to the north east of the Nass beacon is shown in the diagram in the competitors' race packs. The Committee Vessel and start line will be located within the Race Area.

**Competitors are strongly advised to go afloat in adequate time to reach the start area.**

## C7 START LINE

The Start Line for all races will be between the signal mast displaying an orange flag aboard the Committee Vessel and the outer limit mark which will be a buoy laid for the purpose.

Competitors will start in the direction of the first mark of the course.

## C8 COURSES

### MFOBS

- i Both MFOB classes will sail the same course and number of laps. No later than the Preparatory (4 minute) signal for each MFOB class, the Committee Vessel will display the course to be sailed by that class, which will be taken from the courses listed in Appendix C (Note: laminated course cards will be included in competitors packs).
- ii If more than one lap is set, the Committee Vessel will also display the number of laps to be sailed, INCLUDING THE FIRST WINDWARD MARK.  
**NOTE: The course and number of laps displayed at the Warning (5 minute) signal for each class will relate to the preceding class.**
- iii First Mark
  - The first mark of all laps of all MFOB courses will be a yellow inflatable buoy laid approximately to windward of the start line.
  - The Committee Vessel will display a letter 'W'; if the letter 'W' is red then the first mark is to be rounded or passed to Port, if the letter 'W' is green the first mark is to be rounded or passed to Starboard.
- iv After passing or rounding the first mark, the course to be sailed will be that displayed by the Committee Vessel. After starting competitors must NOT pass through the start/finish line at any other time than when completing a lap or finishing a race. The penalty for breaching this Sailing Instruction will be disqualification without a hearing. *This amends RRS 63.*
- vi Competitors must pass through the finish line at the end of each lap and when finishing.

### DINGHY CLASSES

- i All dinghy classes will sail the Triangle sausage course set out in Appendix A.
- ii The number of laps to be sailed by each class will be displayed by the Committee Vessel from the Warning (four minute) Signal.  
**NOTE: The number of laps displayed at the Warning (5 minute) signal for each class will relate to the preceding class.**
- iii After starting competitors must NOT pass through the start/finish line at any other time than when completing a lap or finishing a race. The penalty for breaching this Sailing Instruction will be disqualification without a hearing. *This amends RRS 63.*  
**For the removal of doubt this means that competitors must pass through the start finish line when on the upwind legs of both triangle and sausage; they must not pass through the start finish line when on the downwind leg of the sausage.**

## C9 FINISH LINE

- i The finish line will be the same as the start line. Competitors will cross the line in the direction from the last mark of the course.
- ii Competitors are reminded that the sound signal usually given on finishing a race is not required by the Racing Rules and may be omitted, particularly when such a signal could cause confusion with another classes' start sequence.

## **C10 TIME LIMITS**

A time limit of three (3) hours will apply to all classes. Any boat finishing within this time limit will make the race valid. Any boat failing to finish within a further 45 minutes (i.e. a total of 3hours 45 minutes) will be scored TLE (Time Limit Expired). This changes RRSs 35, A4.1, A5 and A11.

## **C11 IDENTIFICATION STREAMERS**

All competitors in classes 9,10 &11 (dinghies) are required to carry a coloured streamer attached to the head of their mainsail. Streamers will be available from the Race Office prior to racing. Failure to display the correct streamer whilst racing may incur a discretionary penalty without a hearing. This changes RRSs 63.1,64 & A5

## **C 12 POINTS SERIES**

The five races scheduled comprise a series, if four or more races are completed competitors will discard their worst score. If fewer than four races are completed no discard is allowed.

## **C13 SAFETY BOAT DUTY**

The race committee may request that competitors assist with safety boat duties. Any boat prevented from sailing any race or races by such a request will be awarded average points for any such race or races, calculated at the end of the series.

## **C13 MARKS**

The marks to be used are as follow:-

- Orange Race Marks - Numbers 8 & 11.
- Orange Inflatable tetrahedron buoys laid for the week - T1, T2, T3 & T4.
- Three yellow Inflatable buoys laid each day comprising
- First Mark (all classes) Wing Mark & Leeward Mark (dinghy classes only)
- Buoy laid each day - Outer limit Mark.

Note: All marks are shown in their approximate positions on the diagram supplied with the competitors' race packs.

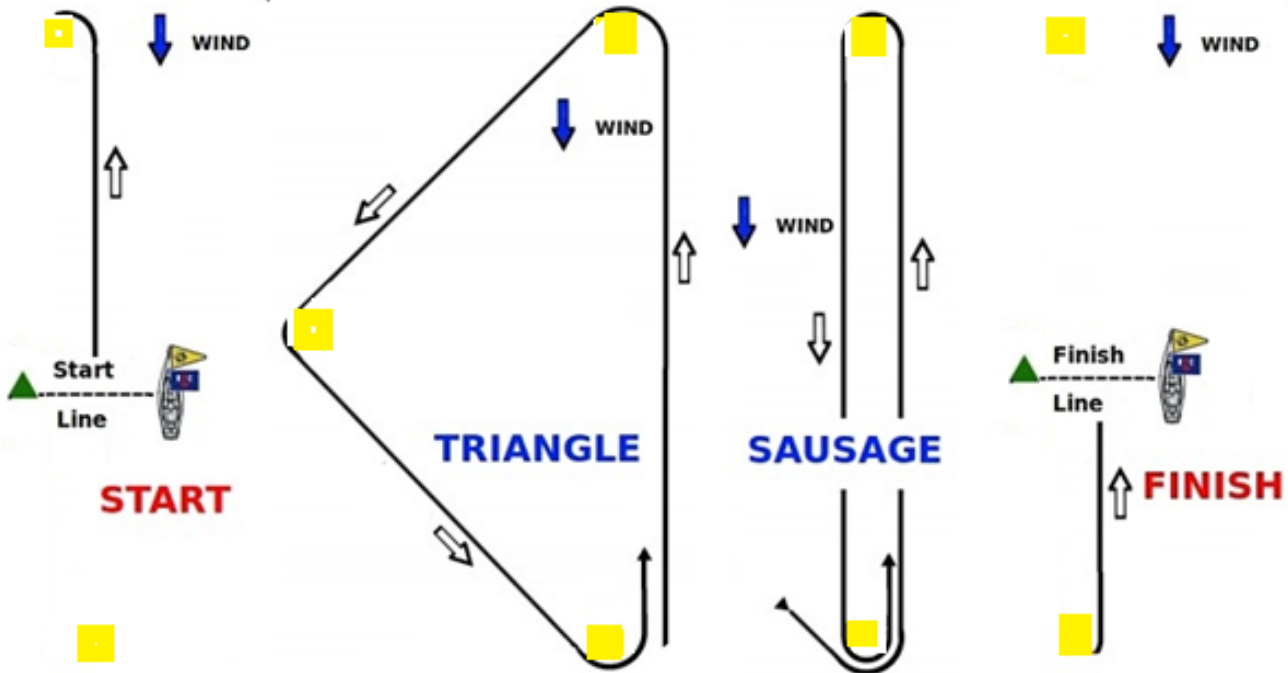
## APPENDIX A

### Course for all Dinghy Classes

Laps One and Three will comprise a triangle

Laps Two and Four will comprise a sausage

If at the Start the Committee Vessel displays a Green Letter W then the course will be reversed and all marks rounded to Starboard.



## APPENDIX B

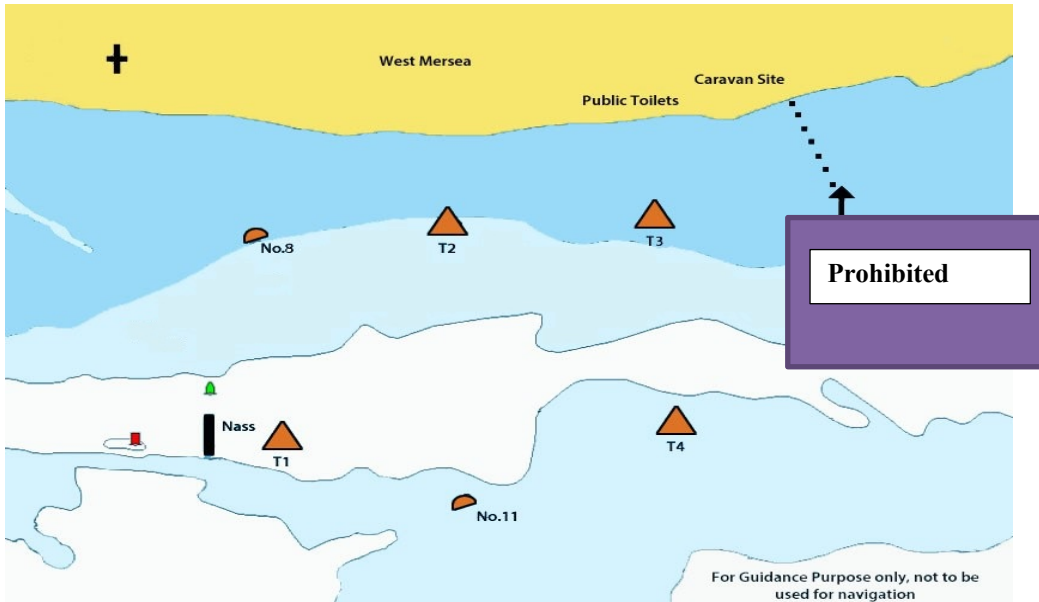
### COURSES FOR MFOBS 2022

ALL MARKS TO BE ROUNDED OR PASSED ON THE HAND & IN THE SEQUENCE INDICATED BELOW:

Code	COURSES	WIND	Distance Approx. Nm
A	11(P); T2(S); T3(S); T1(S); Finish Line	N	3
B	T1 (S); T3 (P); T2 (P); T4 (S); 11 (S); Finish Line	NE	3½
C	8 (S); T3 (S); 11 (S); T2 (P); T1 (P); Finish Line	E	3¼
D	11(S); 8(S); T4(S); T1(S); T2(S); Finish Line	SE	3 ½
E	T2 (S); T4 (S); 11(S); 8(S); Finish Line	SE	3
F	T3(S); T4(S); T1(S); T2(S); Finish Line	S	3
G	T4(S); 11(S); 8(S); T3(S); Finish Line	SW	3¼
H	T3 (S); T1 (P); T4 (P); T2 (P); Finish Line	SW	3½
K	T4 (S); T1 (S); T2 (S); 11(P); T3 (P); Finish Line	W	4
L	11(S); 8(P); T1(P); T3(S); T4(S); Finish Line	NW	3¼

## NOTES

1. All the above courses will begin with a windward mark - see Sailing Instruction C 8 iii
2. If more than one lap is set pass through the Finish Line at the end of each lap.
3. The windward mark is **INCLUDED** in every lap.



## PROHIBITED AREA

There is a prohibited area marked by yellow buoys close to the eastern limit of the Race Area. Competitors must keep clear of this prohibited area at all times.